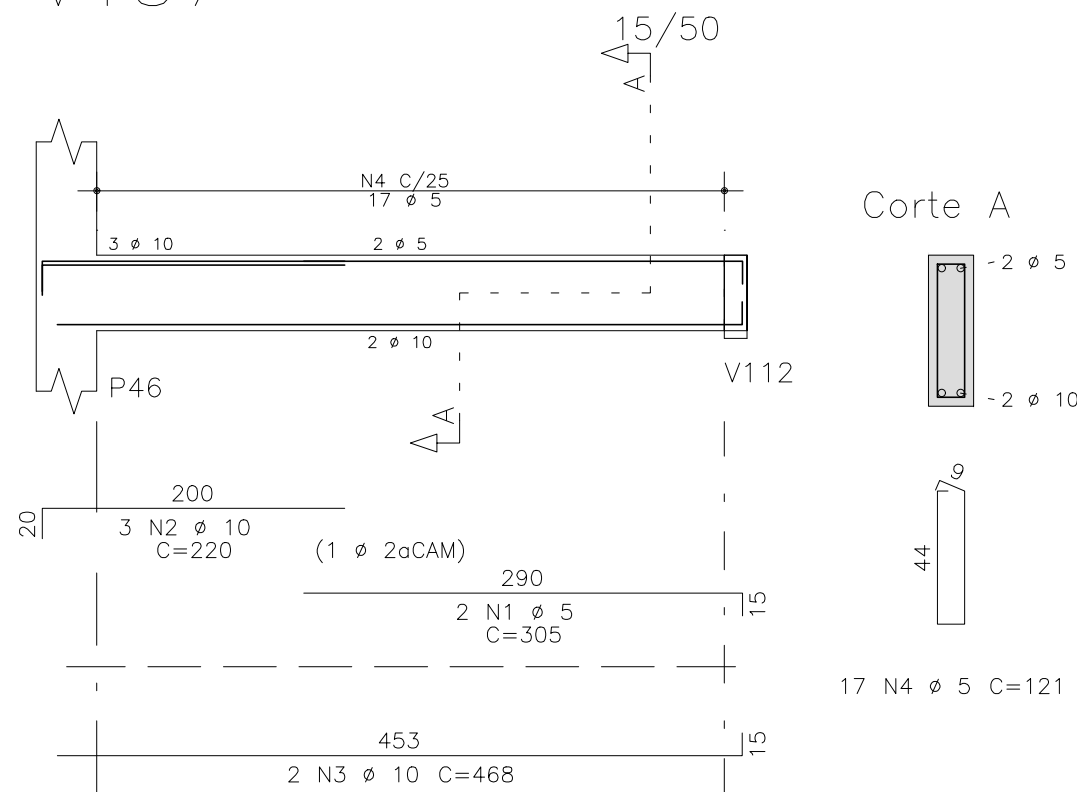
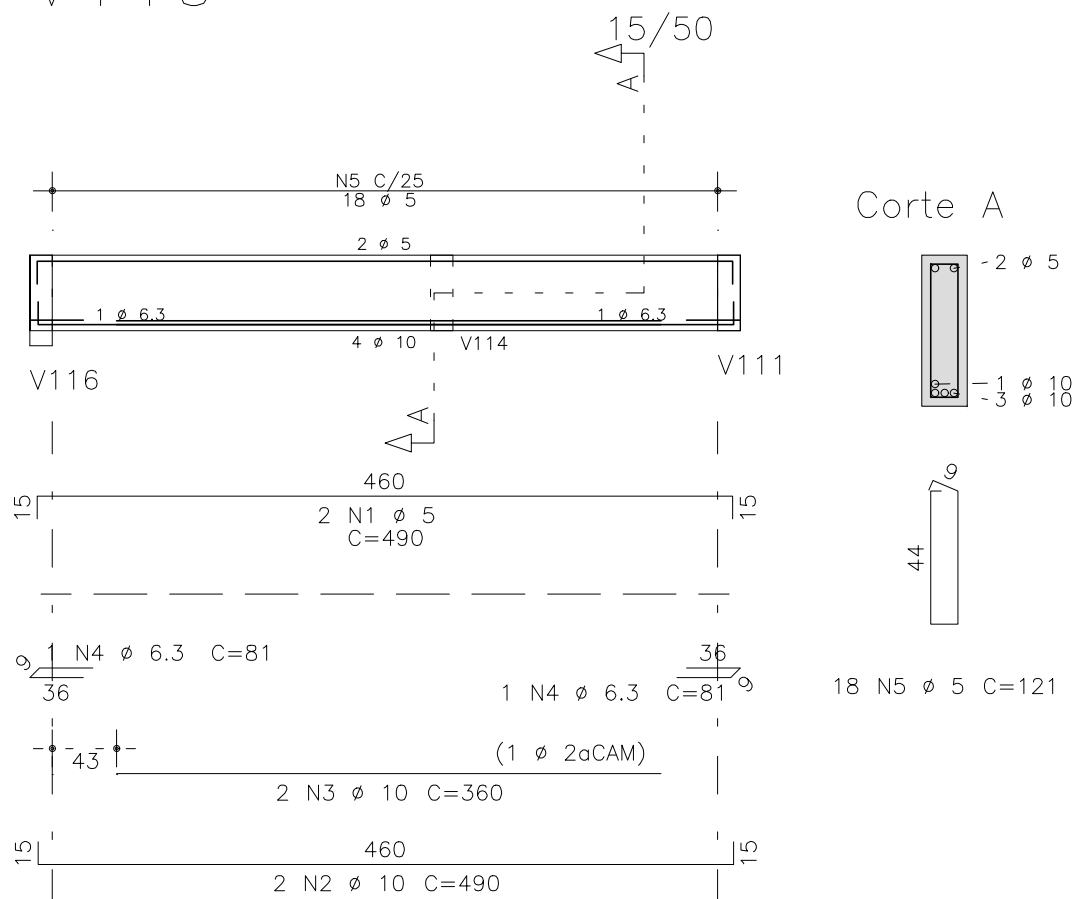


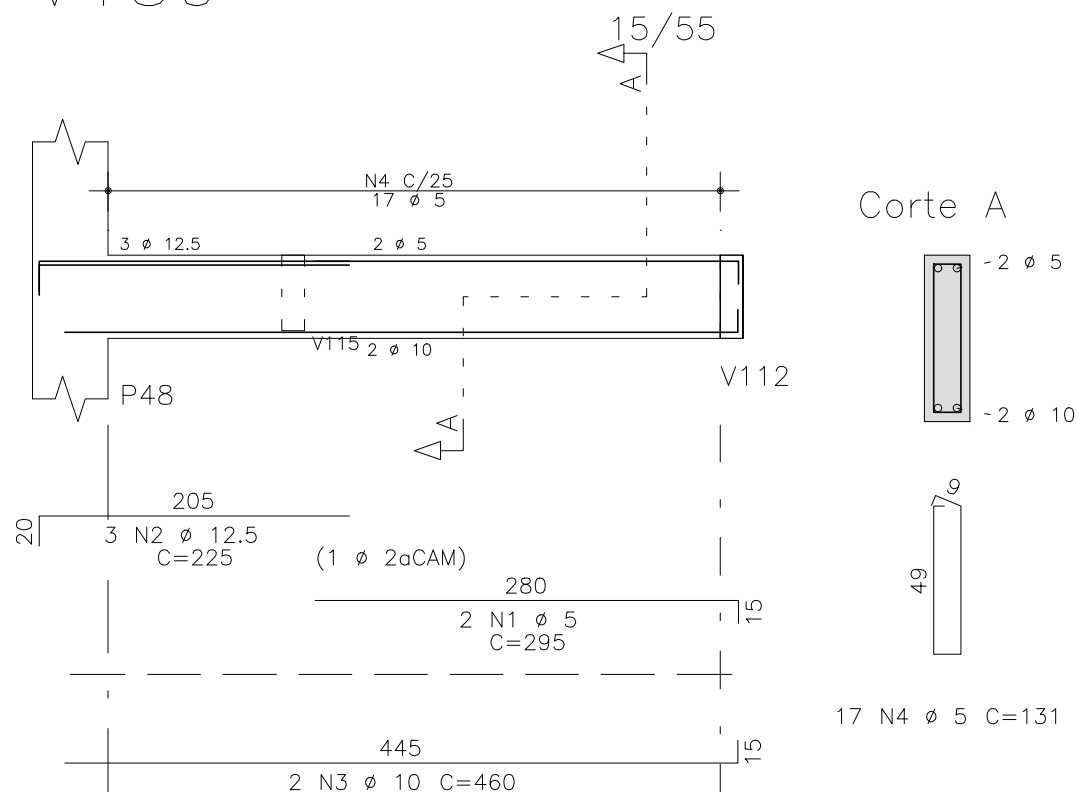
V137



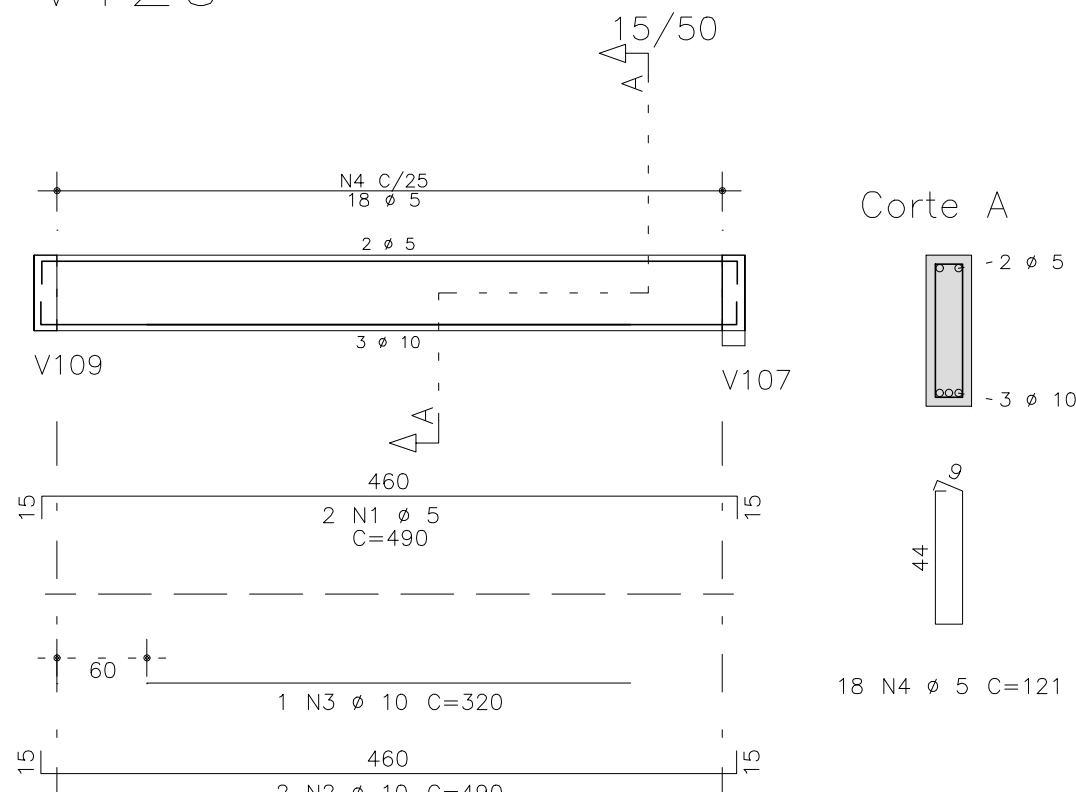
V119



V139

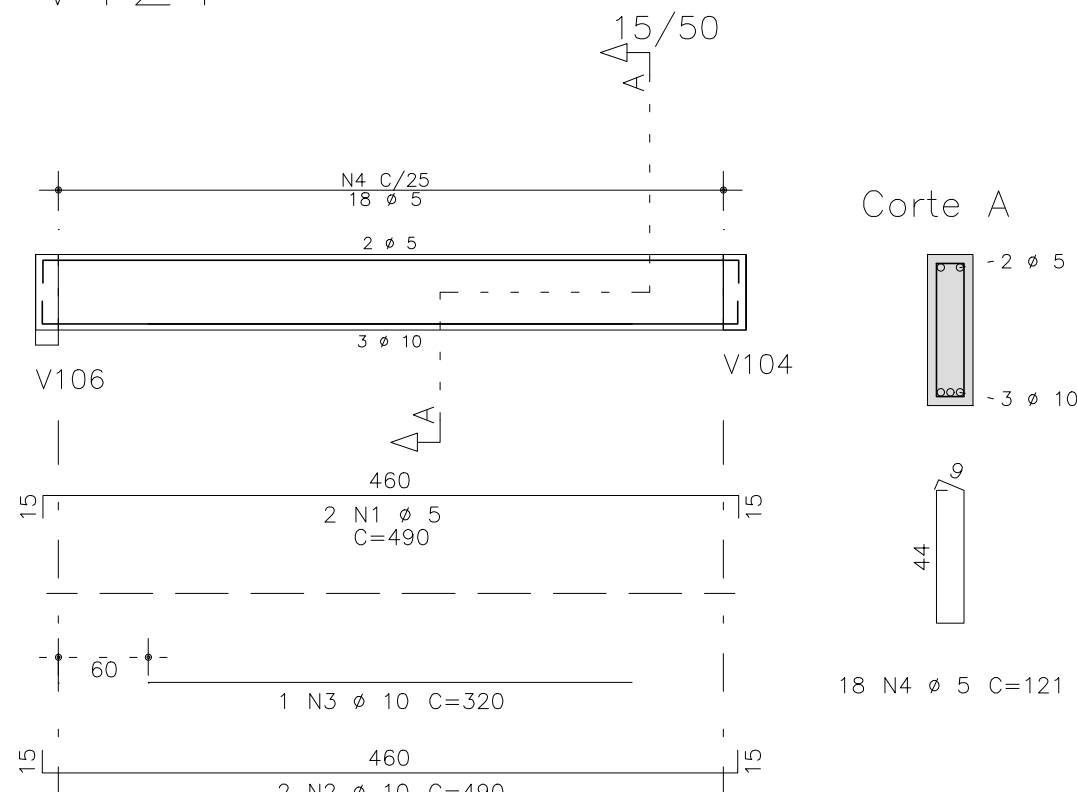


V120

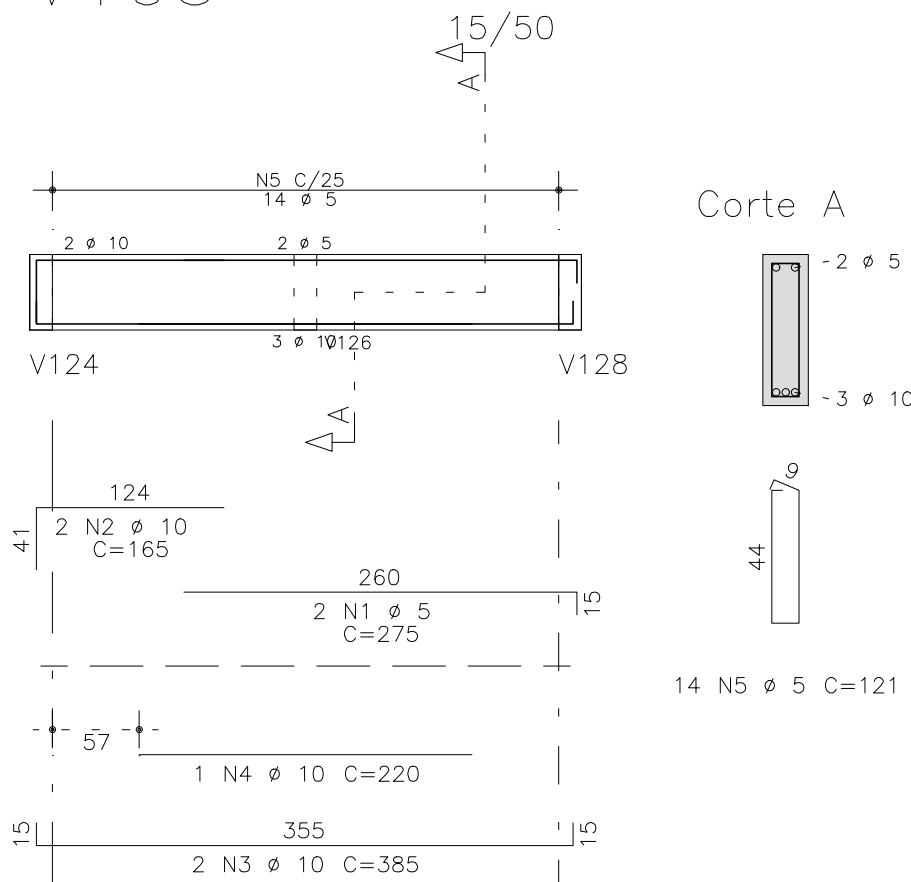


	AÇO	POS	BIT (mm)	QUANT	COMPRIMENTO	
					UNIT (cm)	TOTAL (cm)
V105	60B	1	5	2	275	550
	50A	2	10	2	165	330
	50A	3	10	2	385	770
	50A	4	10	1	220	220
	60B	5	5	14	121	1694
V119	60B	1	5	2	490	980
	50A	2	10	2	490	980
	50A	3	10	2	360	720
	50A	4	6.3	2	81	162
	60B	5	5	18	121	2178
V120	60B	1	5	2	490	980
	50A	2	10	2	490	980
	50A	3	10	1	320	320
	60B	4	5	18	121	2178
V121	60B	1	5	2	490	980
	50A	2	10	2	490	980
	60B	3	5	18	121	2178
V125	60B	1	5	2	200	400
	50A	2	10	2	200	400
	60B	3	5	6	121	726
V132	60B	1	5	2	200	400
	50A	2	10	2	200	400
	60B	3	5	6	121	726
V135	60B	1	5	2	200	400
	50A	2	10	2	200	400
	60B	3	5	6	121	726
V137	60B	1	5	2	305	610
	50A	2	10	3	220	660
	50A	3	10	2	468	936
	60B	4	5	17	121	2057
V139	60B	1	5	2	295	590
	50A	2	12.5	3	225	675
	50A	3	10	2	460	920
	60B	4	5	17	131	2227
V141	60B	1	5	2	200	400
	50A	2	10	2	200	400
	60B	3	5	6	121	726
V142	60B	1	5	2	200	400
	50A	2	10	2	200	400
	60B	3	5	6	121	726

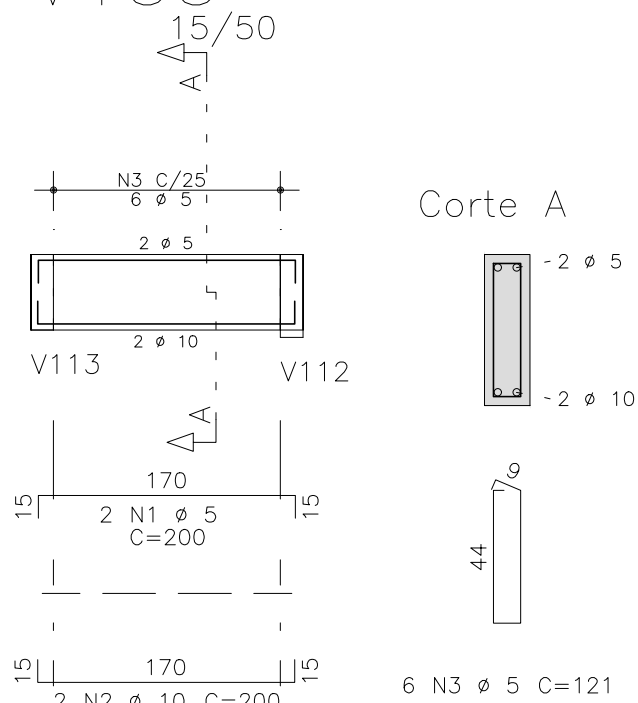
V121



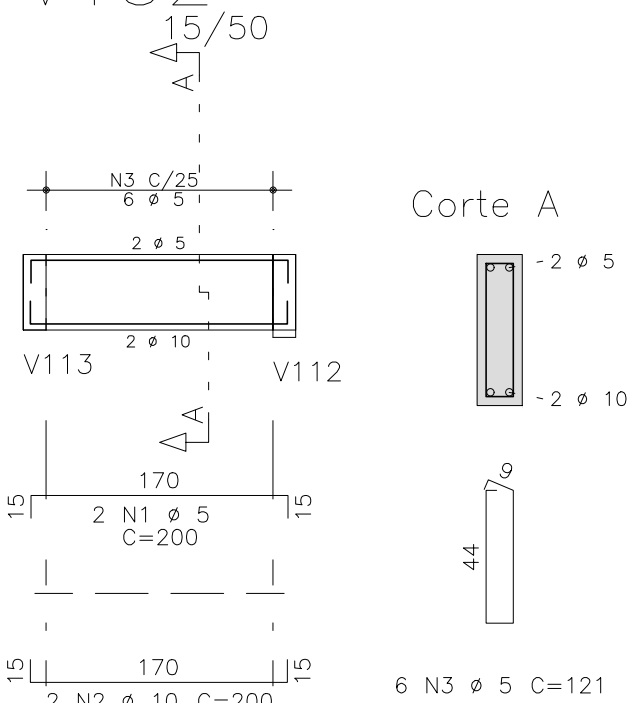
V105



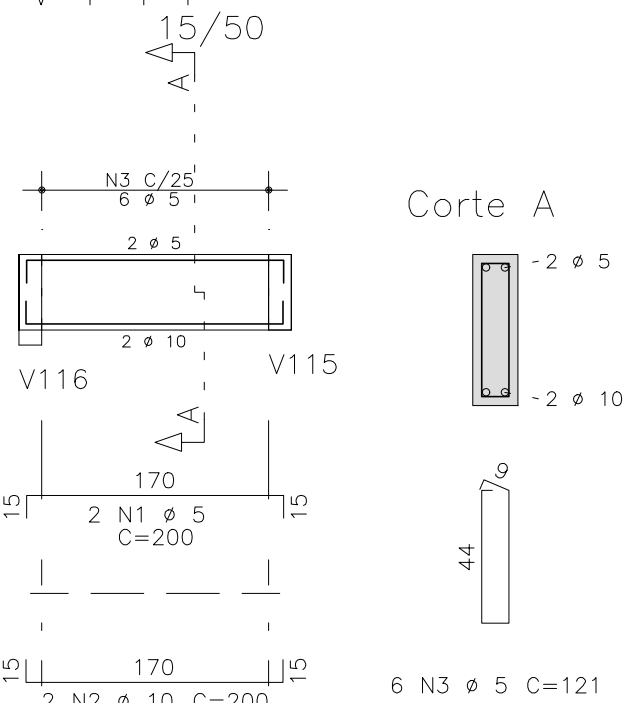
V135



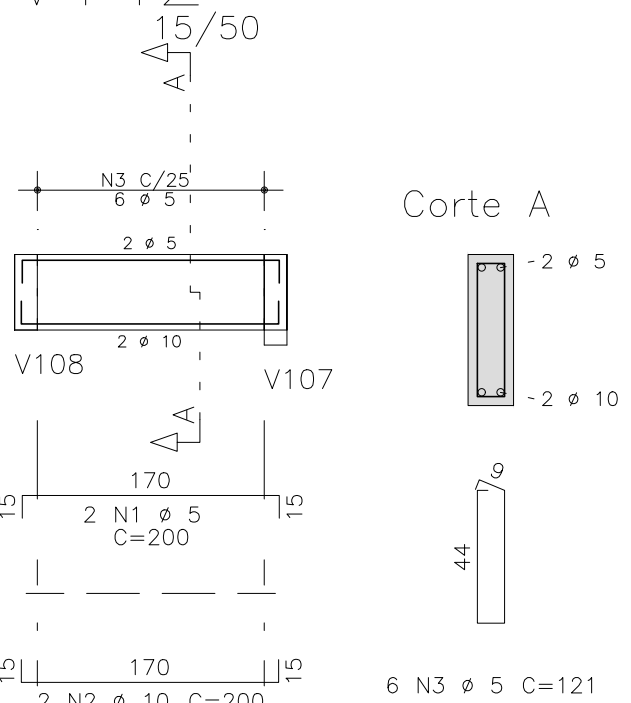
V132



V141

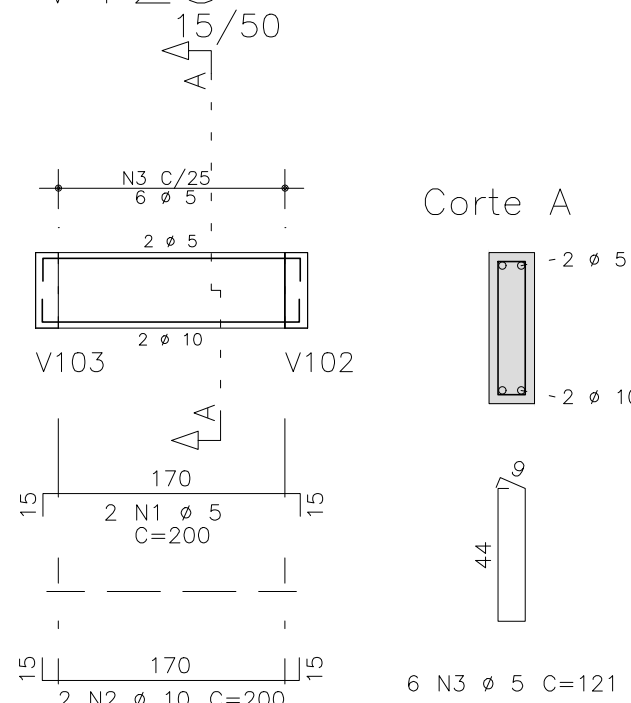


V142



RESUMO AÇO CA 50-60			
AÇO	BIT (mm)	COMPR (m)	PESO (kg)
60B	5	228	35
50A	6.3	2	0
50A	10	101	636
50A	12.5	7	7
Peso Total		60B =	35 kg
Peso Total		50A =	69 kg

V125



O acesso ao Modelo Estrutural em dimensão pode ser executado pelo QR CODE ao lado, podendo acessar via celulares, tablets e quaisquer outros dispositivos.

Schuring & Schuring

Schuring & Schuring Ltda.
Escritório Técnico B.E.SCHURING – Projetos de Engenharia
Av. XV de Novembro, 489 – Porto Zo. Andar – Cuiabá MT
Fone:(065) 321 9959 – Fax:(065) 623 5066 – Email – schuring@terra.com.br

PROJETO:

PROPRIETARIO:

PREFEITURA MUNICIPAL

VARZEA GRANDE MT

RESP. TEC. EXECUCAO:

AUTORES DO PROJETO:

Benedito Eliseu Schuring
Benedito Eliseu Schuring
Eng. Civil - CREA 715/D-MT

Andre Luiz Schuring
Andre Luiz Schuring
Eng. Civil - CREA 8697/D-MT

OBRA:

PREFEITURA MUNICIPAL DE

VARZEA GRANDE MT

Unid. Básica de Saúde

UBS-MATILDE CURVO DE MORAES

END.: Av. dos Bandeirantes.

Conj. Habit. José Carlos Guimarães, Várzea Grande-MT

ASSUNTO: BALDRAME

DET ARM VIGA

PECAS DETALHADAS

V105 / V119 / V120 / V121 / V125 / V132

V135 / V137 / V139 / V141 / V142

FOI:

DIREITOS AUTORES RESERVADOS

VERIFICAR MEDIDAS NA OBRA

DATA:

15/07/2019

FOLHA No.

18